



AutoCAD®

autodesk®

AutoCAD 2005

**Efficiently Create, Manage and
Share Sets of Drawings**

[This is the Speaker's Name]
[This is the Speaker's Title]

mensch  **maschine**
CAD as CAD can

Salzburg



Klagenfurt

mfh
computer.cad

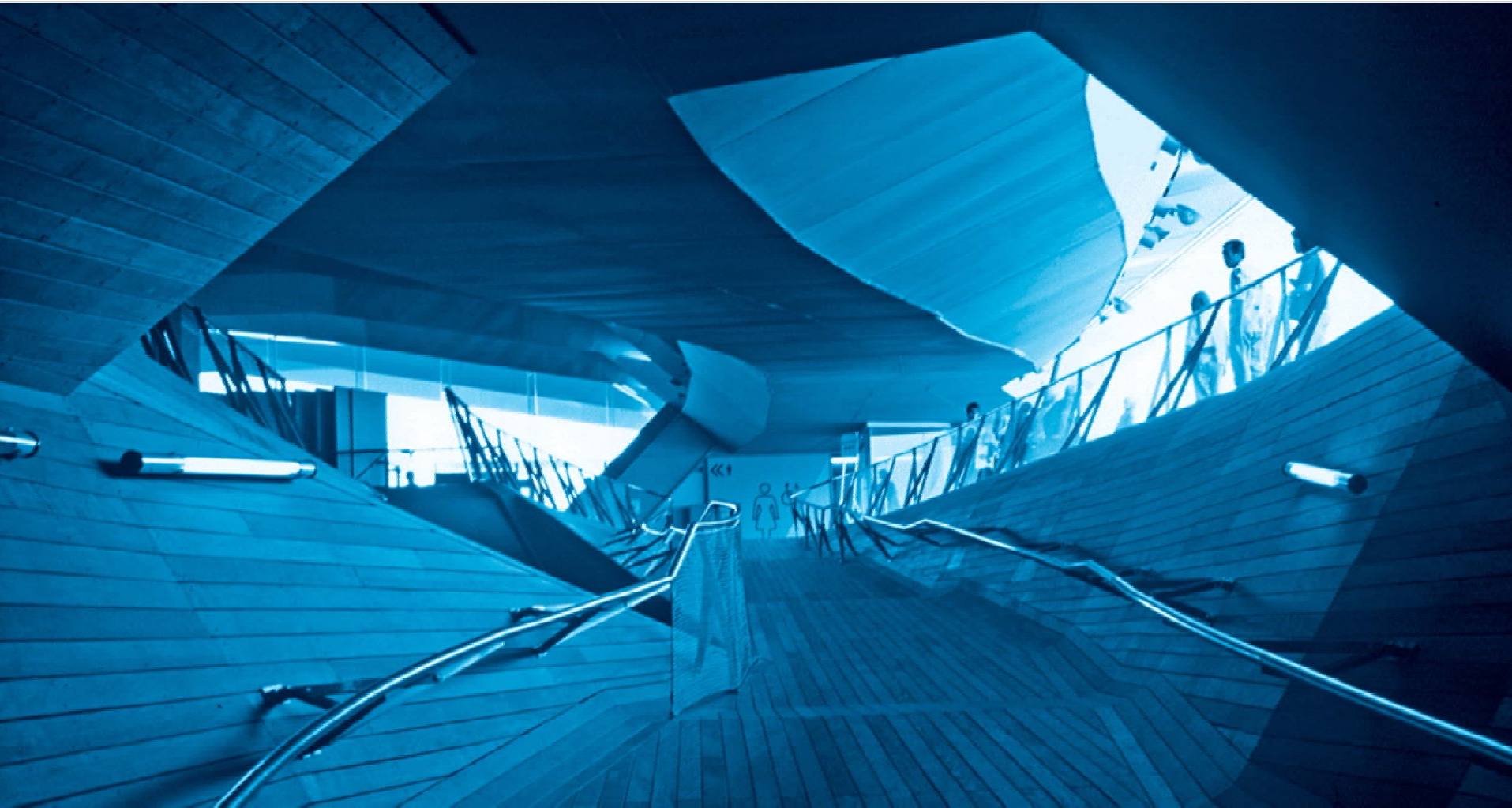
Wien

AutoCAD®

autodesk®

Always Go Further – with AutoCAD® 2005

AutoCAD® 2005 software helps you create, manage, and share better-coordinated documentation with maximum efficiency.



introduction



manage



create



share



transition



closing

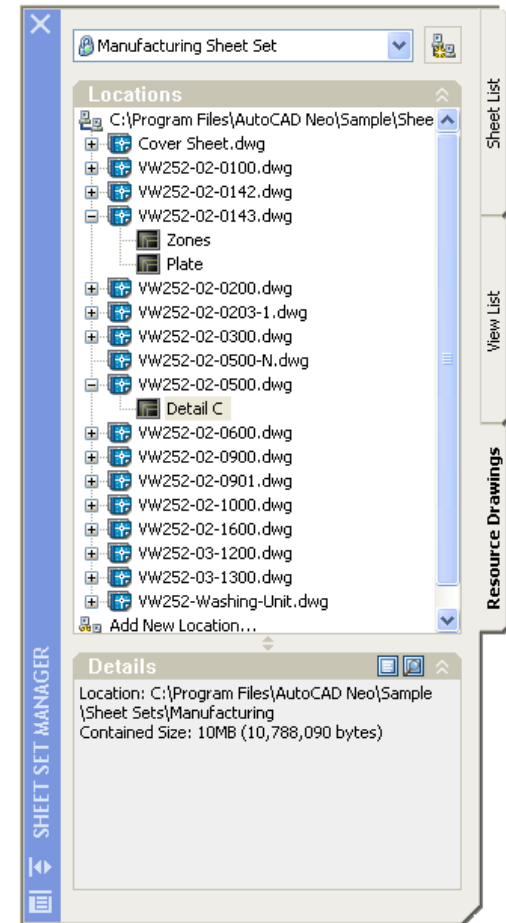
autodesk®

Create, Manage, Share

AutoCAD 2005 – the New Sheet Set Manager

Sheet Set Manager

- Archive
- Callouts
- eTransmit drawings
- Plotting sets
- Publish sets
- Sheet index
- Transmittal set



introduction



manage



create



share



transition



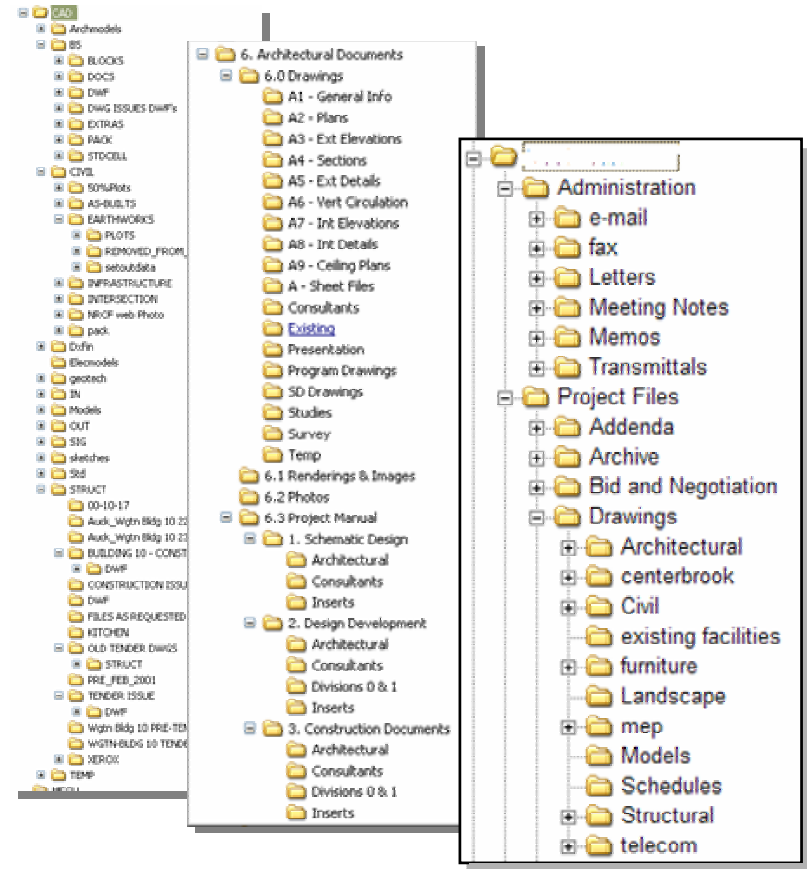
closing

autodesk

Create, **Manage**, Share

The Old Way - Sheet Set Coordination

- Locate drawings in a project directory
- Identify drawings as part of the set
- Determine number of the next sheet
- Send individual drawing files to client
- Apply project standards



"We spend a lot of time in Windows Explorer trying to organize and manage the 100's of files for each project."



introduction

manage

create

share

transition

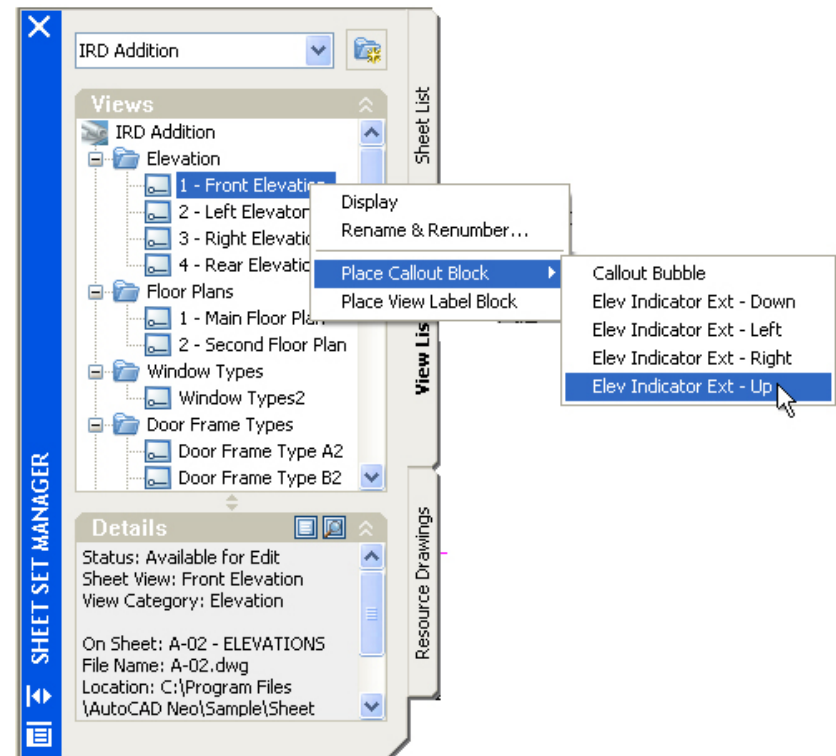
closing

autodesk

Create, **Manage**, Share

The 2005 Way – Sheet Set Manager

- Simplified:
 - Drawing organization
 - Plotting and publishing
 - Transmittal sets
 - Archiving
- Standards compliance
- Multi-user access



"The Sheet Set Manager adds a new way of thinking about how drawings are made in AutoCAD... it's just not a cluster of drawings. They are now looked upon as a complete design... This will help to improve work flow and productivity by making sure values are correct through the entire set."



introduction

manage

create

share

transition

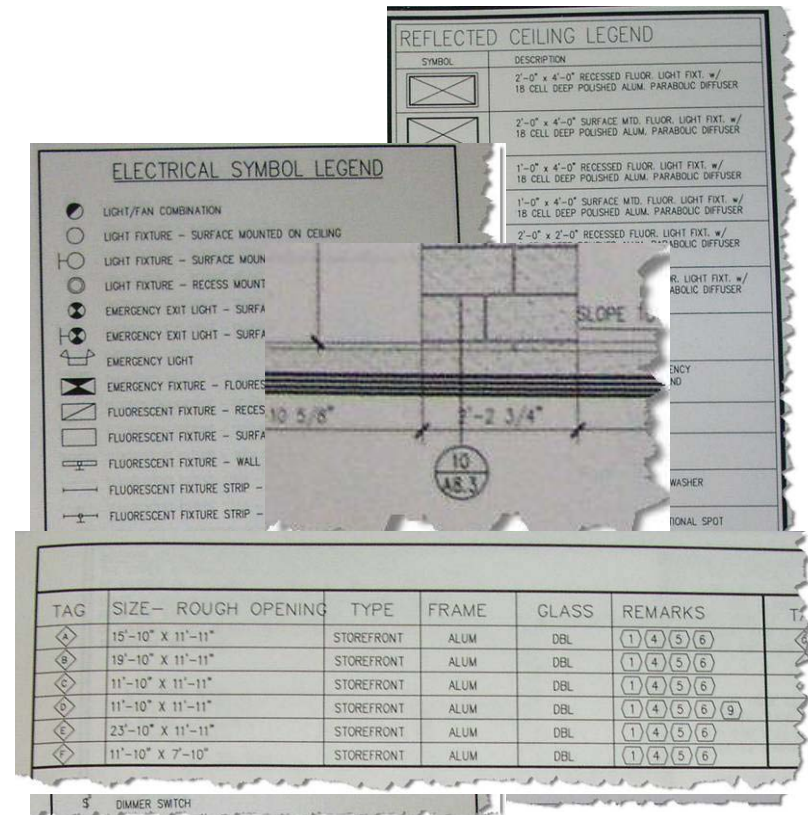
closing

autodesk

Create, Manage, Share

The Old Way – Production

- Create details, sections, and callouts by hand
- Manually draw tables from lines and text
- Update project indexes
- Place title block information and sheet numbers, then update as project information changes



"I probably spend half my time revising items that are not even part of the design... such as page numbers, revision numbers, dates and so on... This is a major chore."



introduction

manage

create

share

transition

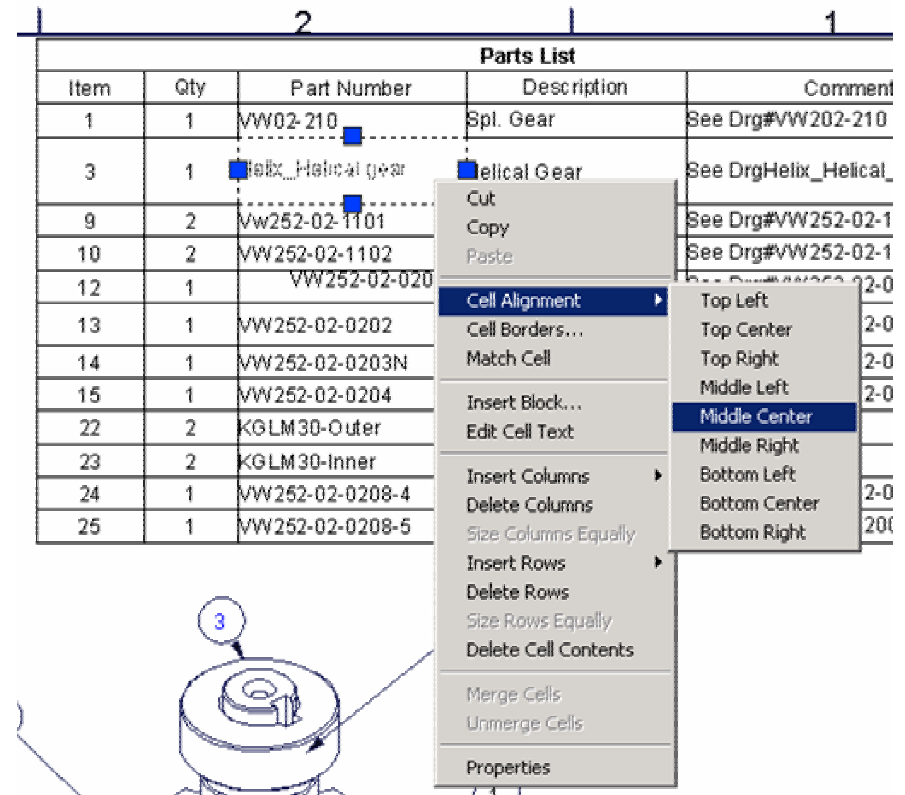
closing

autodesk

Create, Manage, Share

The 2005 Way – Tables

- Simple
 - Table creation
 - Text editing
 - Adding rows and columns
- Data import/export
- Insert symbols in tables



"Tables will be a very quick add into our CAD standards. We have many instances where we need Retaining wall schedules, bolt schedules, wall and so on ... The tables are fantastic- this is worth an upgrade alone."

Create, Manage, Share

The 2005 Way – Fields

- Automatically fill in:
 - Sheet numbers
 - Project name
 - Client information
 - Drawing dates
- Create tables or text labels using object data
- Automated plot stamping

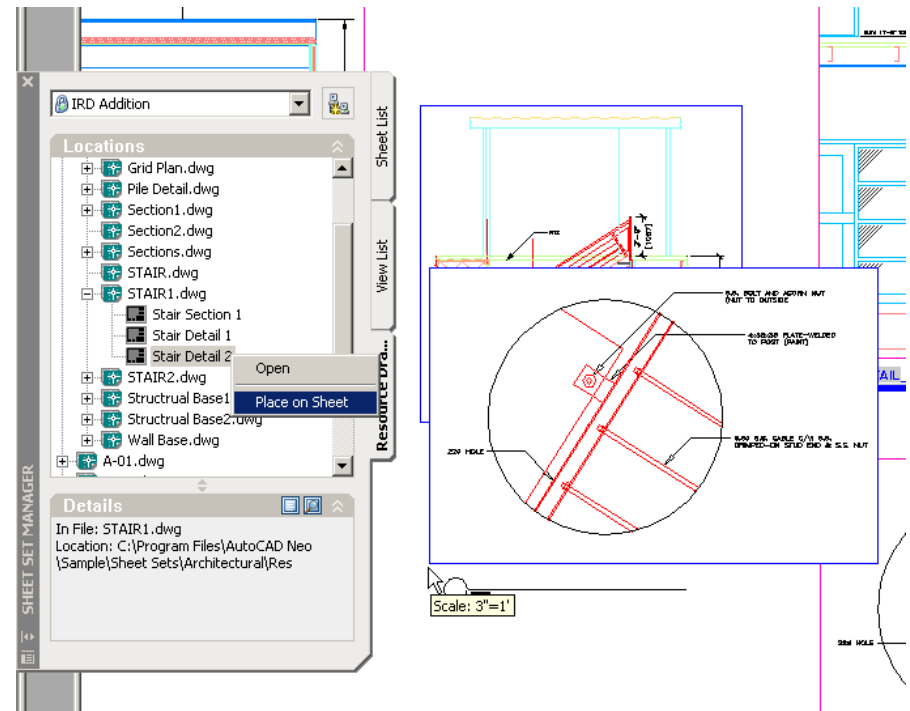
TITLE	
PLAN ELEVATION & DETAILS	
PROJECT NAME AND ADDRESS	
2 VOLVO TAMD 73P EDC 450 HP FOR: MR. DENNIS DE MELLO <i>Capt. Crunch</i> MIDDLE ROAD DOCKYARD	
SCALE	DWG. No.
AS SHOWN	BOAT
DATE	
CHK. BY	
STEVE	DWG. BY DE MELLO
REF. No	PROJECT
PLN: B0000 / 00	100029

"The new Fields feature will go a long way. It covers just about everything I can pretty much think of... from Dates to even drawing elements."

Create, Manage, Share

The 2005 Way – Callouts

- Drag-and-drop detail creation
 - Automated detail labeling
 - Automated callouts creation
- Synchronized updates of callout and detail labels
- Find details by selecting callouts



introduction



create



share



transition



closing

autodesk®

Create, Manage, **Share**

The Old Way - Plotting

- Find and plot the individual files that comprise a drawing set
- Wait for AutoCAD to “come back” from a lengthy plot job
- Help colleagues debug failed plot jobs
- Track what drawings have been plotted for a project



“When we print a drawing set, we do it one page at a time, then manually collate the project, and recheck it for errors.”



introduction

manage

create

share

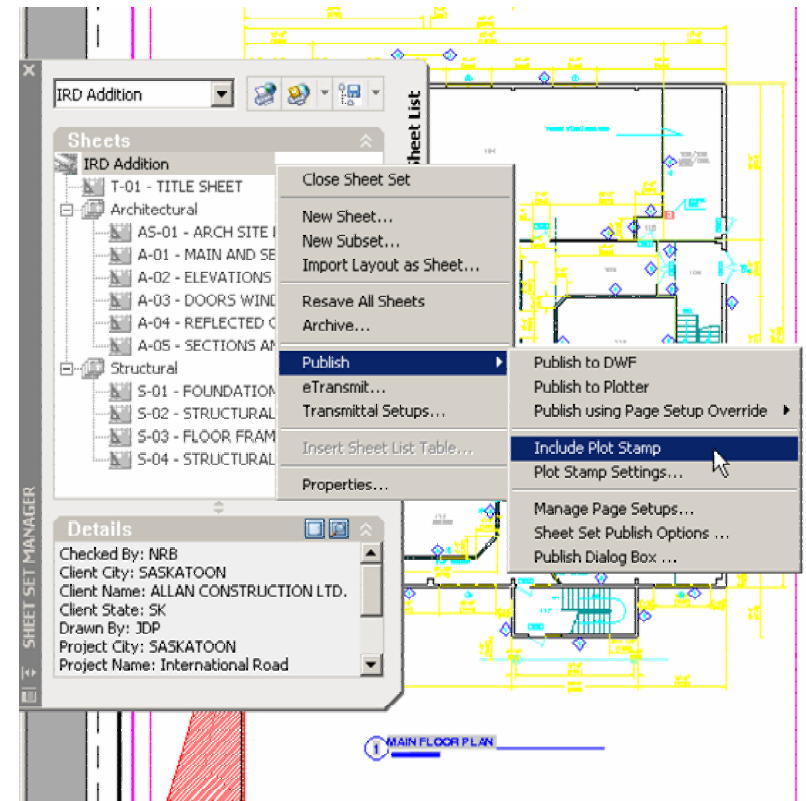
transition

closing

autodesk

Create, Manage, Share The 2005 Way - Plotting

- Sheet Set Manager provides:
 - Right click to plot entire set
 - Complete plot job list
 - Standardized plot setting
- Keep working while job plots in background
- Plot log tracks plot job information



“When publishing a 200+ sheet job to a plotter, being able to sort sheets into the correct order is a huge need. Thanks for including this improvement in 2005!”



introduction



manage



create



share



transition

closing

autodesk®

Create, Manage, Share The 2005 Way - Publishing

- Improve teamwork and efficiency
- Improve teamwork and workflow in the review and approval process
- Speed decision-making and reduce cycle times for greater efficiency
- Provide a complete, cost-effective, secure solution

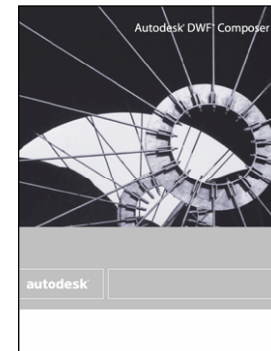


Autodesk® DWF™ Viewer

More efficient than paper!
Better than PDF!



DWFiT



Autodesk® DWF™ Composer



introduction

manage

create

share

transition

closing

autodesk®

Create, Manage, **Share**

The 2005 Way – Integrated Design Review

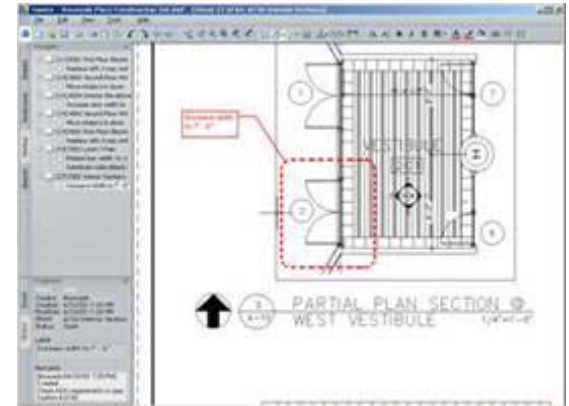
1. Publish

- Multi-sheet DWGs



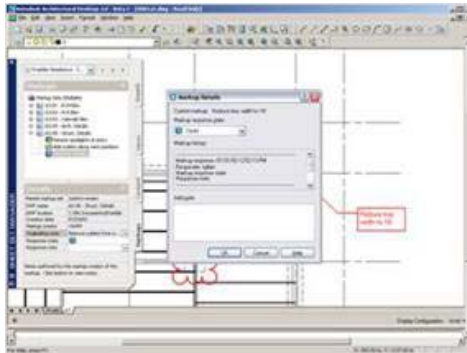
2. Autodesk DWF Composer

- View and print to scale
- Mark up, measure, annotate
- Manipulate sheet set



3. AutoCAD 2005

- View, track, and navigate redlines and markups
- Comment
- Make change



"DWF and AutoCAD 2005 make up a really complete workflow solution."

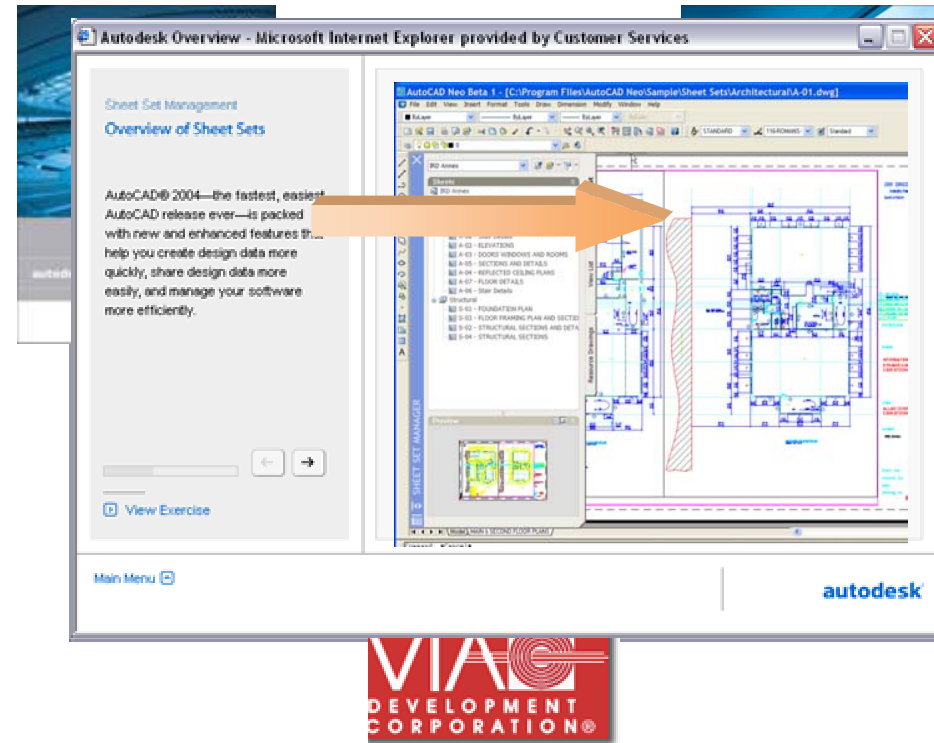


autodesk

Create, Manage, Share

Easing the Transition

- DWG-compatible with AutoCAD 2004
- Side-by-side install
- Integrated migration tools
- 3rd-party application compatible
- Interactive New Features Workshop



introduction

manage

create

share

transition

closing

autodesk®

Create, Manage, Share AutoCAD 2005

Plot dialog enhancements

Mtext Enhancements

- Background mask
- Annotation symbols

Improved Hatch

- Trim hatch patterns
- Auto-close boundary gaps
- Automated draworder

Zoom to object

Layer enhancements

- groups
- filters

Maintain Xrefs when inserting blocks

Dimension background mask

Block selection by name

Calligraphy to revcloud

Midpoint between two points - osnap

Prompt for block rotation/scale on drop from tool palette

Prevent Toolbar customization

Express Tools

- Edittime
- Text Draworder

WYSIWYG draworder

Relative paths for images

"This new release is just that--a release... not a couple little enhancements and some patches rolled up with a new splash screen. The members of the Autodesk team have done a superb job in getting many great enhancements into such a tight time frame."



autodesk

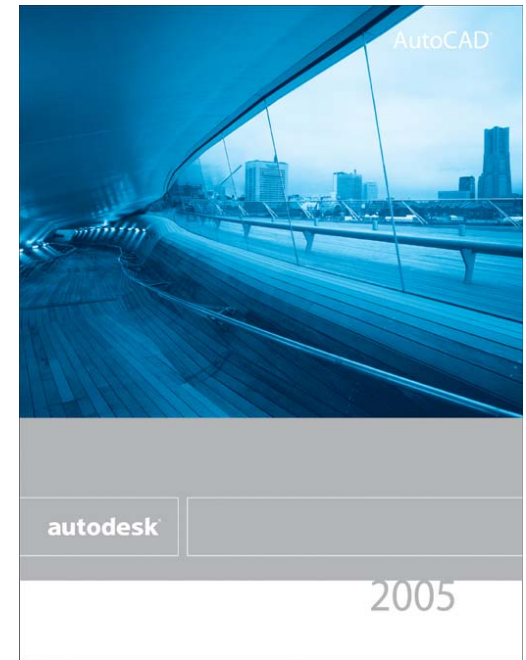
Always Go Further

AutoCAD 2005 – the New CAD Standard

AutoCAD 2005 helps you optimize single drawing creation. Now you can also manage entire sets of related drawings.

This enables you to:

- Reduce risk from information coordination errors and better adherence to CAD standards
- Create and update drawings faster and easier
- Reduce time spent plotting and publishing drawing sets for distribution



introduction

manage

create

share

transition

closing

autodesk

Always Go Further

AutoCAD 2005 – the New CAD Standard

Systemvoraussetzungen:

Autodesk empfiehlt für AutoCAD 2005 folgende Systemvoraussetzungen:

Intel® Pentium® III oder höher mit 800 MHz- oder anderem kompatiblen Prozessor (Minimum)

Microsoft® Windows® XP (Professional, Home Edition oder Tablet PC Edition) oder Windows® 2000 Professional

256 MB RAM

300 MB freier Festplattenspeicher für die Installation

1024 x 768 VGA-Anzeige mit True Color

Microsoft® Internet Explorer 6.0

CD-ROM-Laufwerk

Maus, Trackball-Maus oder kompatibles Zeigegerät



introduction

manage

create

share

transition

closing

autodesk

Always Go Further

AutoCAD 2005 – the New CAD Standard

FAQ:

1: Wann ist AutoCAD 2005 erhältlich?

ab Ende März/ Anfang April

2: Kann AutoCAD 2005 gemeinsam mit AutoCAD® 2004, 2002, 2000i oder 2000 eingesetzt werden?

Ja.

3: Haben sich bei den Zeichnungsdateien (DWG) in AutoCAD 2005 im Vergleich zu AutoCAD 2004 geändert ?

Nein.

4: Liest und speichert AutoCAD 2005 auch Zeichnungen, die in früheren AutoCAD-Versionen erstellt wurden?

AutoCAD 2005 liest Zeichnungsdateien aus allen AutoCAD-Vorgängerversionen.

„Speichern unter“ können Sie die Versionen 2000/2000i/2002/2004, sowie weitere DXF-Formate.

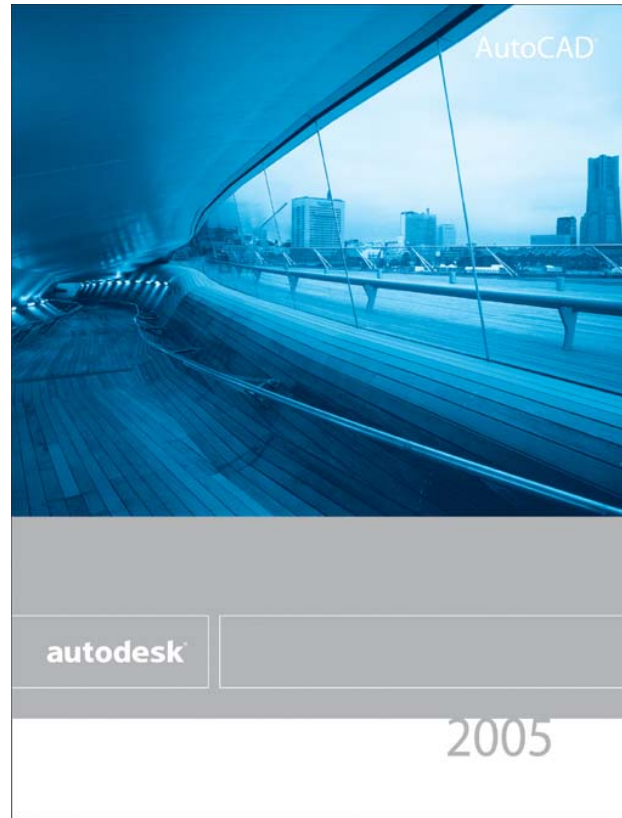
5: Welche Auswirkungen haben die Änderungen in AutoCAD 2005 auf AutoLISP®-Programme?

AutoLISP®-Routinen, -Linientypendateien, -Schraffurmuster und PGP-Dateien, die für AutoCAD 2000/2000i/2002/2004 entwickelt wurden, funktionieren auch in AutoCAD 2005.



autodesk®

Fragen?



Danke für das Interesse !



introduction

manage

create

share

transition

closing

autodesk



AutoCAD®

autodesk®